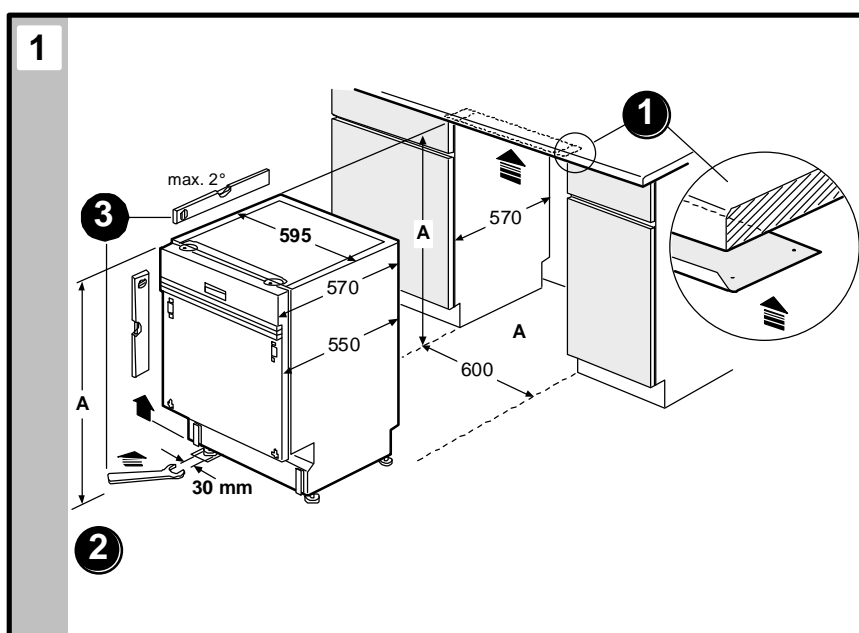
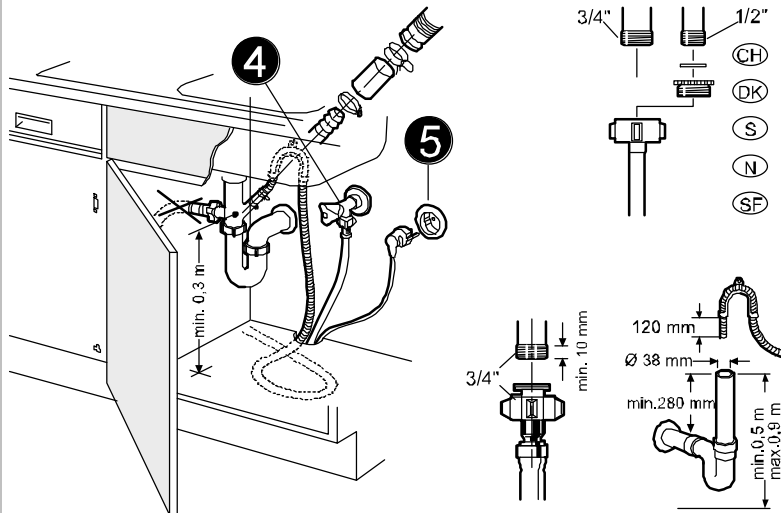


ASSEMBLY INSTRUCTIONS FOR MACHINE DOOR WITH VIEW AND HIDDEN CONTROL PANEL

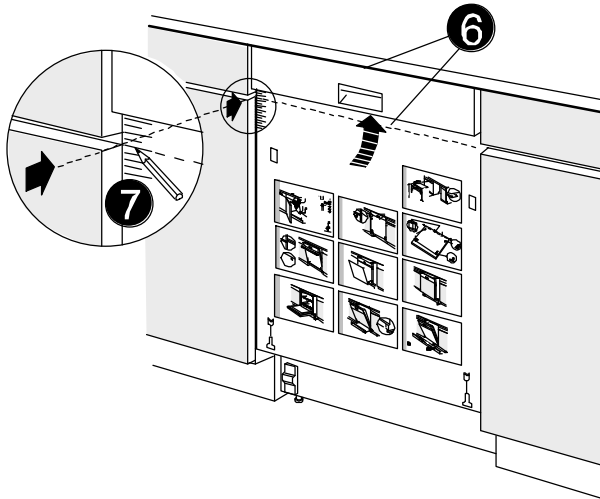
- 1) FIT a protection under the worktop TAB. 1(1).
- 2) ADJUST the levelling feet until the required height is reached, TAB. 1(2-3). Should a sufficient height not be reached, place a board under the feet. Then put the machine in its designated position.
- 3) CONNECT the drain pipe, the water inlet pipe and electric cable TAB. 2(4-5).
- 4) POSITION the cardboard template in the lower part of the control panel or under the work top (for model with hidden feature), mark on the template the height of the door of the surrounding pieces of furniture TAB. 3(6-7).
- 5) POSITION the template on the inner part of the wooden door so that the marked reference points match the upper edge of the door panel TAB. 4(8); mark the centre of the holes for fastening the support plates of the small wooden door on the machine door as in TAB. 4(9-10-11).
- 6) INSERT the 10 or 5 mm spacers and the two fastening screws under the control panel between the door panel and the under part of the last spacer installed TAB. 5(12-13) (for model with view control panel only).
- 7) PULL out the machine from its housing TAB. 6(14), to mount the shutter-wood TAB. 6(15-16) and fasten it with the screws TAB. 7(17).
- 8) If necessary, ADJUST the balance of the door proceeding as in shown in TAB. 8(18); reposition the machine and line it up with the other pieces of furniture TAB. 8(19).
- 9) After securing the machine TAB. 9(20), ADJUST the base as shown in the two assembly diagrams TAB. 9(21-22).



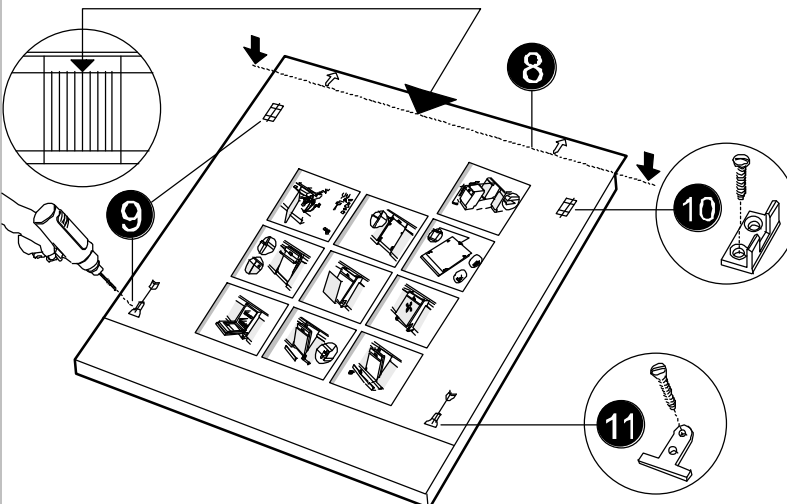
2



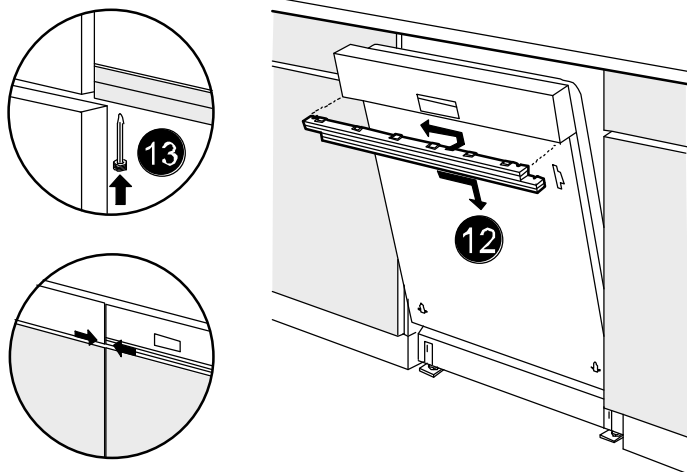
3



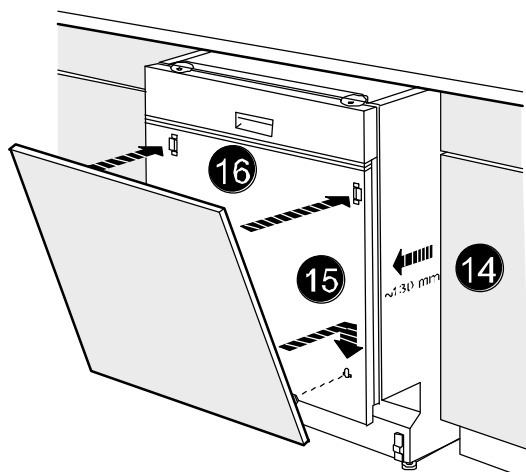
4



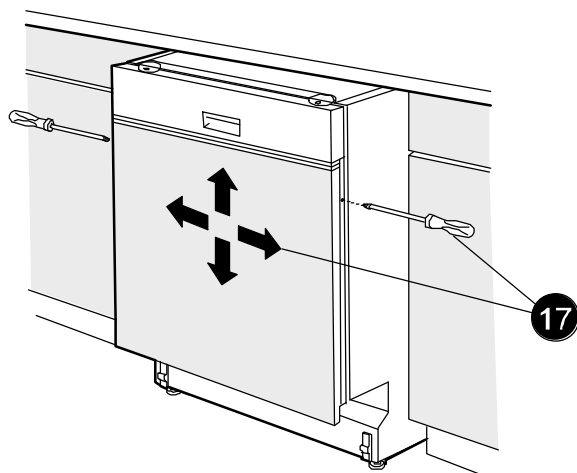
5



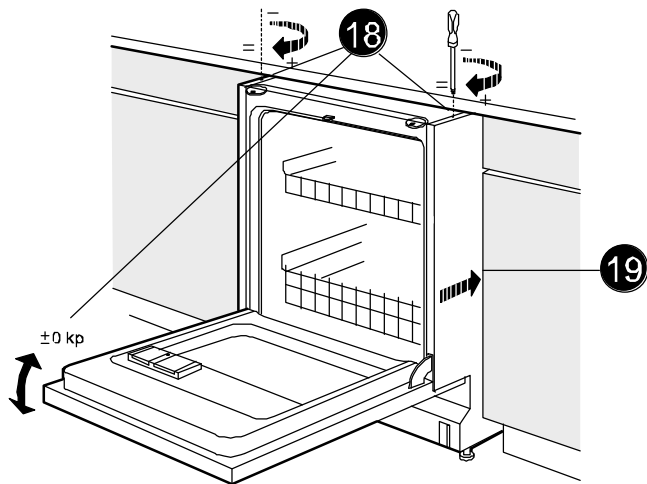
6



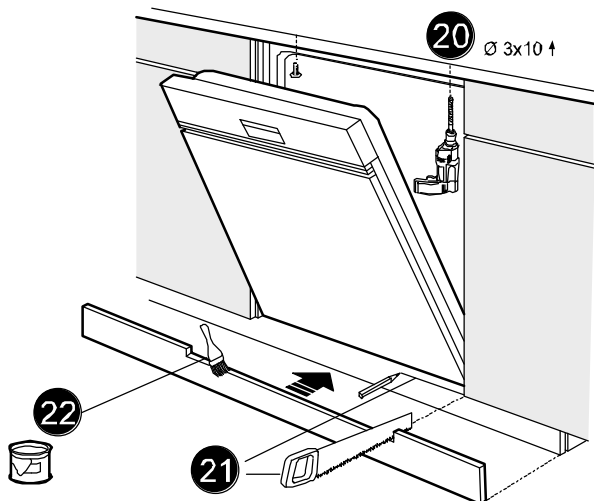
7



8



9



9

