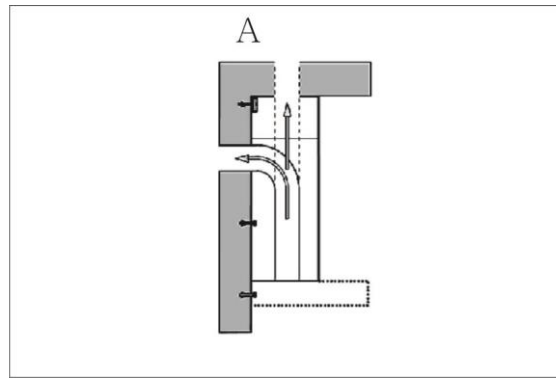
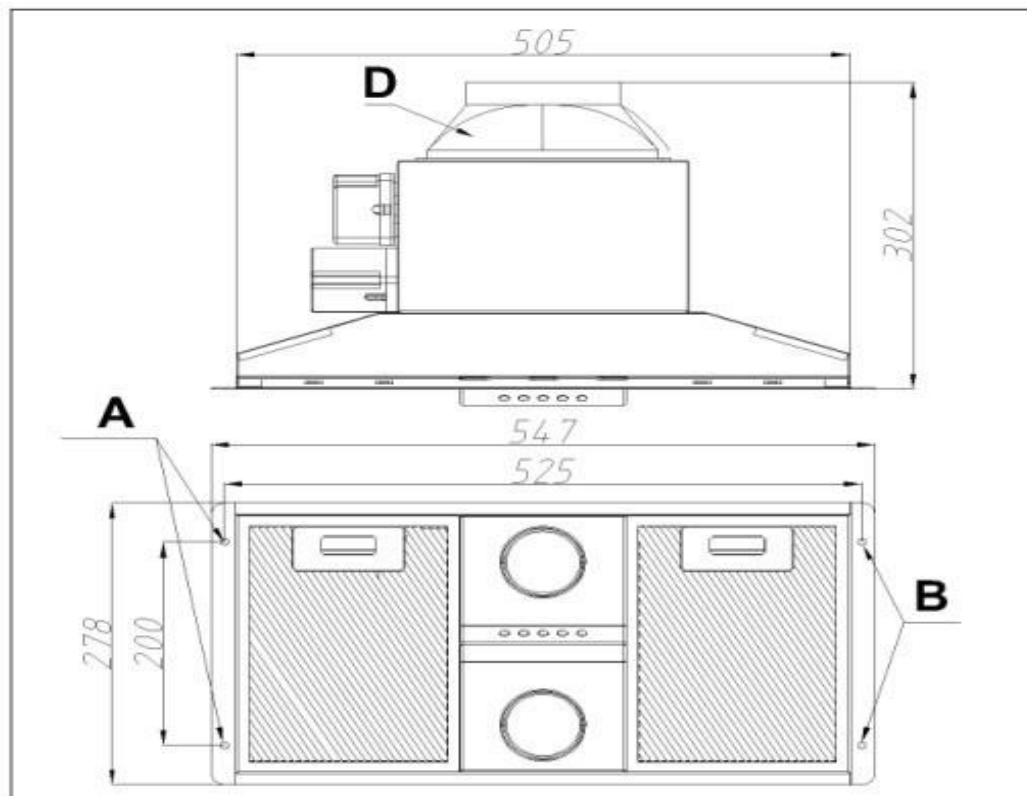


**LOFCP750SS**

**UNDERMOUNT COOKER HOOD**



**Fig.1**



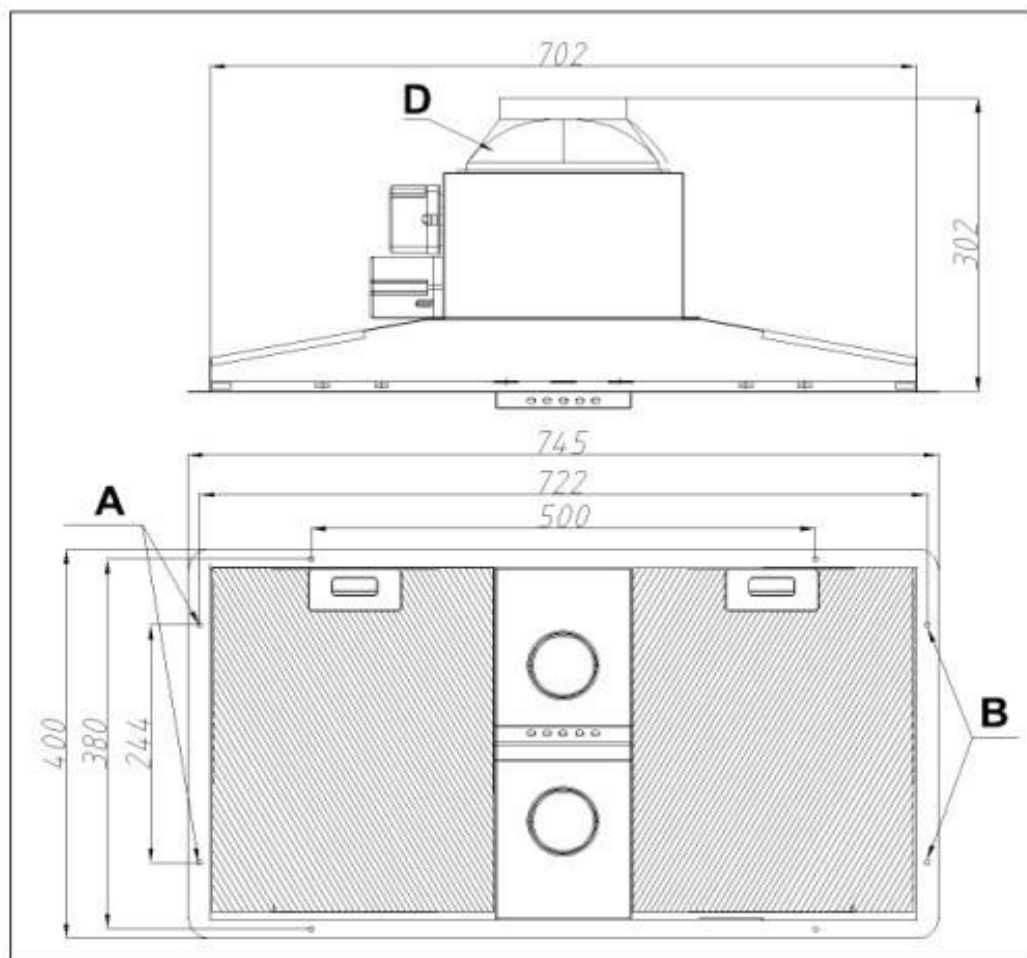
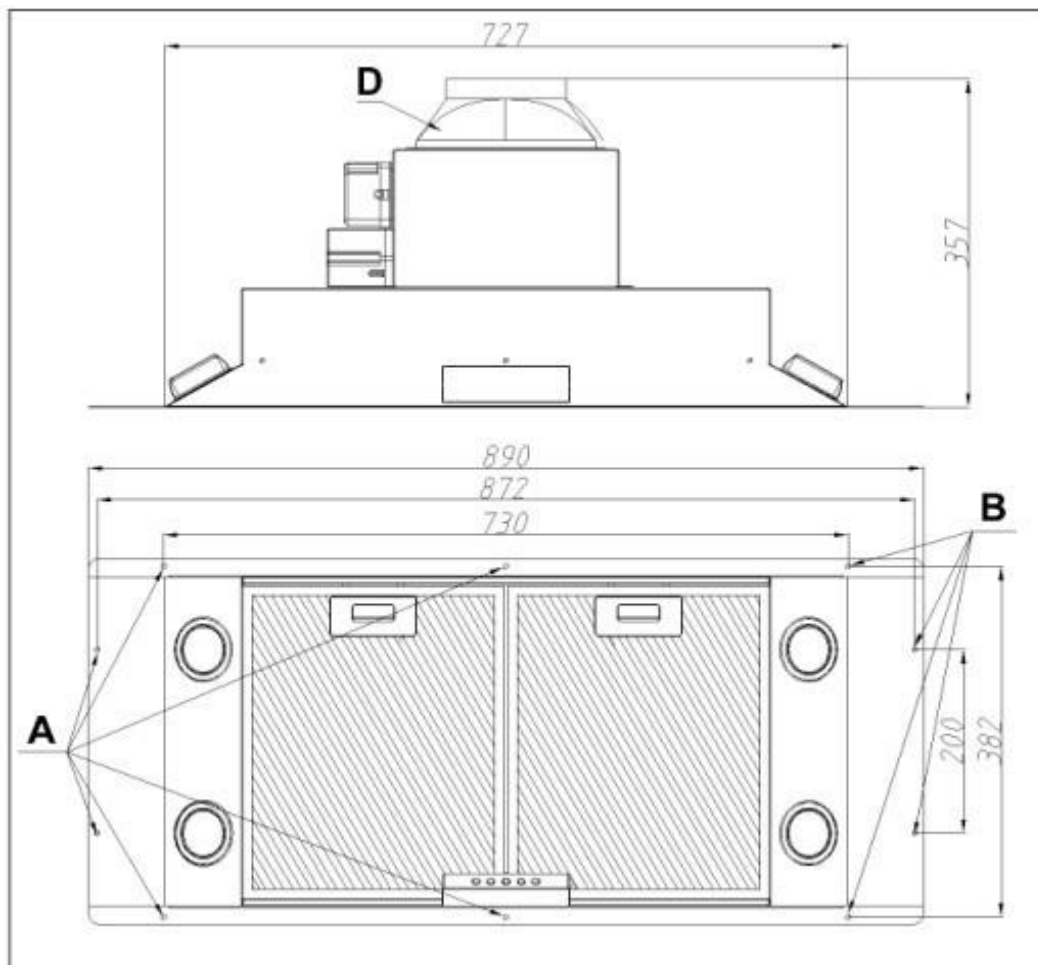
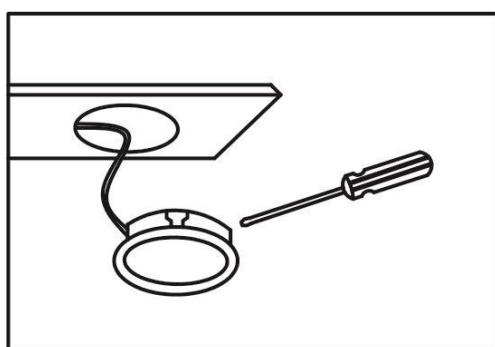


FIG1

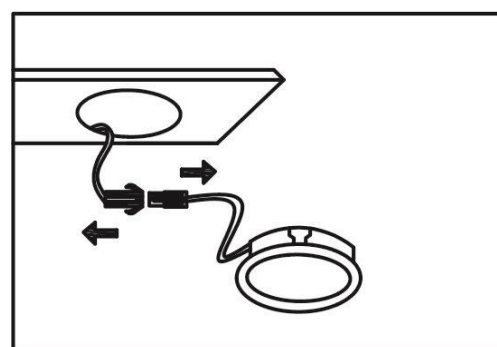


**Fig.2**



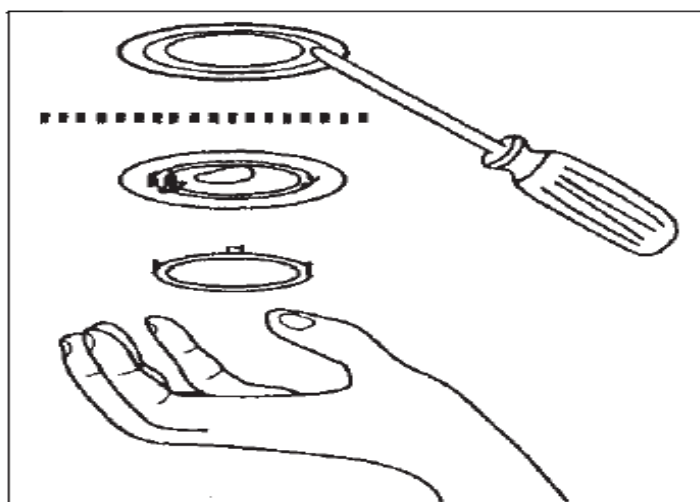
**LED lamp assembly**

**Fig.4**

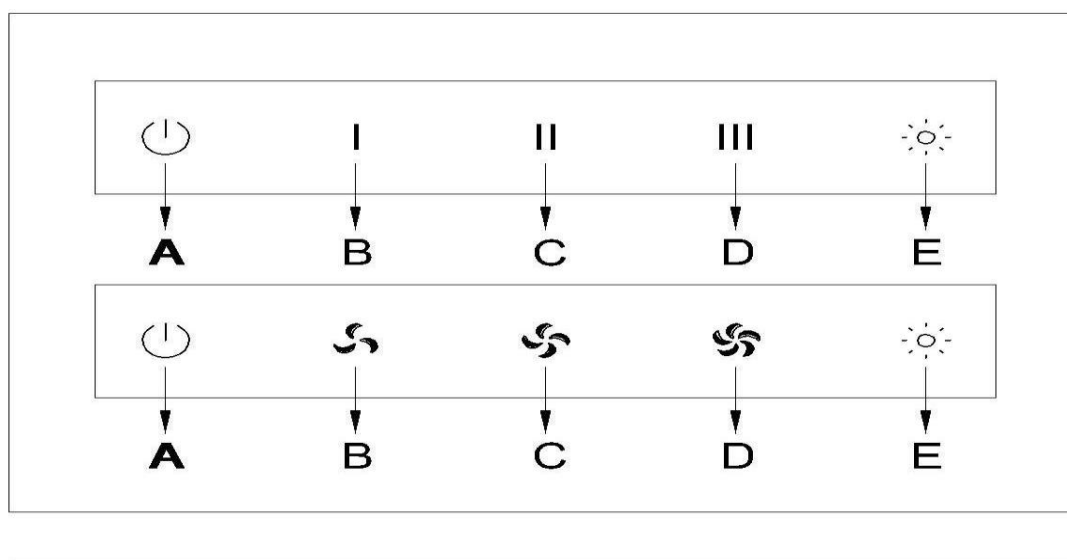


**LED lamp assembly**

**Fig.5**



**Fig.6 Halogen unit**



**Fig.7**

## **GENERAL**

Carefully read the following important information regarding installation safety and maintenance. Keep this information booklet accessible for further consultations. The appliance has been designed for use in the ducting version (air exhaust to the outside – Fig.A).

## **SAFETY PRECAUTION**

1. Take care when the cooker hood is operating simultaneously with an open fireplace or burner that depend on the air in the environment and are supplied by other than electrical energy, as the cooker hood removes the

air from the environment which a burner or fireplace need for combustion. The negative pressure in the environment must not exceed 4Pa (4x10<sup>-5</sup> bar). Provide adequate ventilation in the environment for a safe operation of the cooker hood.

Follow the local laws applicable for external air evacuation.

### **Before connecting the model to the electricity network :**

Check the data plate (positioned inside the appliance) to ascertain that the voltage and power correspond to the network and the socket is suitable. If in doubt ask a qualified electrician.



- **Do not check the status of the filters while the Range Hood is operating.**
- **Do not touch bulbs or adjacent areas, during or straight after use.**
- **Do not flambé under the Range Hood.**
- **Disconnect the electrical plug prior to any maintenance.**
- **This appliance is not intended for use by young children or infirm persons without supervision.**
- **Young children should be supervised to ensure they do not play with the appliance.**
- **There shall be adequate ventilation in the room when the Range Hood is used at the same time as appliances burning gas or other fuels.**
- **There is a fire risk if cleaning is not carried out in accordance with the instructions.**

**THE MANUFACTURER DECLINES ALL RESPONSIBILITY FOR DAMAGES CAUSED BY BREACHING THE ABOVE WARNINGS.**

### **INSTALLATION INSTRUCTIONS**

Assembly and electrical connections must be carried out by specialized personnel.

#### **Electric Connection**

The appliance has been manufactured as a class **I**, therefore earth cable is

necessary.

The connection to the mains is carried out as follow:

	IEC227
L=live	Brown
N=neutral	Blue
E=earth	Green/Yellow

If not provided, connect a plug for the electrical load indicated on the description label. Where a plug is provided, the cooker hood must be installed in order that the plug is easily accessible.

An Omni polar switch with a minimum aperture of 3mm between contacts, in line with the electrical load and local standards, must be placed between the appliance and the network in the case of direct connection to the electrical network.

● The minimum distance between the trivets on the cooker top and the lowest part of the cooker hood must be at least 650mm and the highest 750mm .

Do not connect the cooker hood exhaust to the same Flue used to circulate hot air or for evacuating fumes from other appliances generated by other than an electrical source.

Before proceeding with the assembly operations, remove the anti-grease filter(s) so that the unit is easier to handle.

In the case of assembly of the appliance in the suction version prepare the hole for evacuation of the air.

## USE AND MAINTENANCE

● It is recommended to operate the appliance prior to cooking.

It is recommended to leave the appliance in operation for 15 minutes after cooking is terminated in order to completely eliminate cooking vapors and odor.

The proper function of the cooker hood is conditioned by the regularity of the maintenance operations, in particular, the grease filters.

● The anti-grease filters capture the grease particles suspended in the air, and are therefore subject to clogging according to the frequency of the use of the appliance.

In order to prevent fire hazard, it is recommendable to clean the Grease

filters at a regular interval of 2 months by carrying out the following instructions:

- Remove the filters from the cooker hood and wash them in a solution of water and neutral liquid detergent, leaving to soak.
- Rinse thoroughly with warm water and leave to dry.
- The filters may also be washed in the dishwasher.

The aluminum panels may alter in color after several washes.

This is not cause for customer complaint or replacement of panels.

Clean the oil cup on a regular basis by removing the grease filters and sliding out the plastic cup.

- Clean the fan and other surfaces of the cooker hood regularly using a cloth moistened with denatured alcohol or non abrasive liquid detergent.
- Illumination installation is designed for use during cooking and not for prolonged general illumination. Prolonged use of the illumination notably reduces the duration of the lamps.

Use a flat blade screwdriver or any other appropriate tool to lift and remove the overhead LED lamp fixture. Replace the faulty 1 watt LED lamp. Use only LED lamp assembly as the original specification; Return the LED lamp fixture to its position. (Fig.4) (Fig. 5)

- **COMANDS:** (Fig.6)

**A= OFF**

**B= SPEED I**

**C= SPEED II**

**D= SPEED III**

**E =LIGHT**

When pressing the key B, the display light is flashing and please run in SPEED 1.If you want to stop, you only press the key A.

When pressing the key E, the display light is flashing and then turn on the light, If you want to turn off the light, you only press the key once again.

When the motor and the light work together or individually, press the key A, and stop the activated functions of the timer automatically .The display light is flashing countdown which will continue functioning for 15 minutes, and the motor and the lights will be turned off. For stopping the timer, only press the key once again.

Manufacturers stated strictly that we refuse to take any responsibility because of the results caused by any violation of the above procedures



### Finding the problems and maintance.

Problem	Possible reason	Solution
Hood doesn't work	No electric supply	Check the plug is connected
		Check the main switch is turned on
Poor airflow	Aluminum grease filters clogged	Clean the filters and replace when dry
Motor running but no air flow	Butterfly valve jammed	Contact technician
Motor cuts after a few minutes	High temperature safety device activated	The kitchen is not sufficiently ventilated
	The hood is installed too near the cooking stove	The hood must be least 65cm from stove
Oil dripping onto stove	Oil cup full, missing or not installed	Remove aluminum grease filter and clean / refit oil cup
	Aluminum grease filter saturated	Wash the aluminum grease filters
Whirring sound	Something in contact with fan blade	Contact with technician

