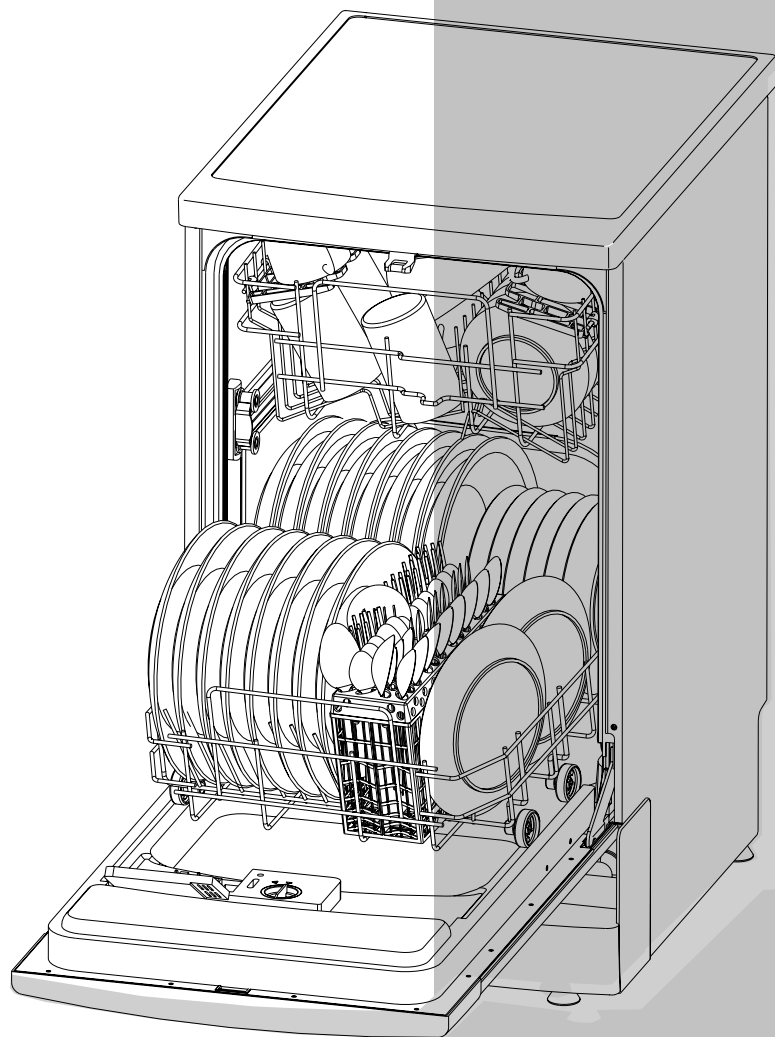


Dishwasher Installation and Maintenance Instructions



Content List

Chapter I	Installation-----	1
1.1	Safety Instruction-----	1
1.2	Installation Instruction-----	2
1.3	Trial running-----	4
Chapter II	Maintenance-----	5
2.1	Foreword-----	5
2.2	Troubleshooting-----	5
2.3	Note-----	8
2.4	Attached drawings-----	8
	TD Series Timer Electric diagram-----	9
	TD Series Timer Connection diagram-----	10

Chapter I Installation

1.1 Safety Instruction

After unpacking, the appliance should be checked to see if there is any damage to it.

The dishwasher is intended to wash dishes and plates by adults.

When using the dishwasher , some basic principals should be followed:

- 1) Extended power cord and adaptor should not be used.
- 2) The power cord should not be too long or knotted.
- 3) Switch off the power before making any repair of the dishwasher.

Children should be kept away from the detergent and the opened dishwasher.

Then dishwasher should not be installed in an unsheltered place or exposed to the rain or other natural environment.

Never touch the heating element during or immediately after use.

The dishwasher should not be lean on or sit on when it is open, otherwise it will be overturned.

If the dishwasher malfunctions, turn off the water inlet and cut off the power before you read the instruction of Chapter II . If the problems cannot be solved by yourself, please contact the professional technicians.

The dishwasher could not be repaired by unprofessional personnel with non-original spare parts.

It is recommended that if the dishwasher will not be used for a long time, it should be cut off the water inlet, remove the plug and keep the door of dishwasher ajar.

1.2 Installation Instruction

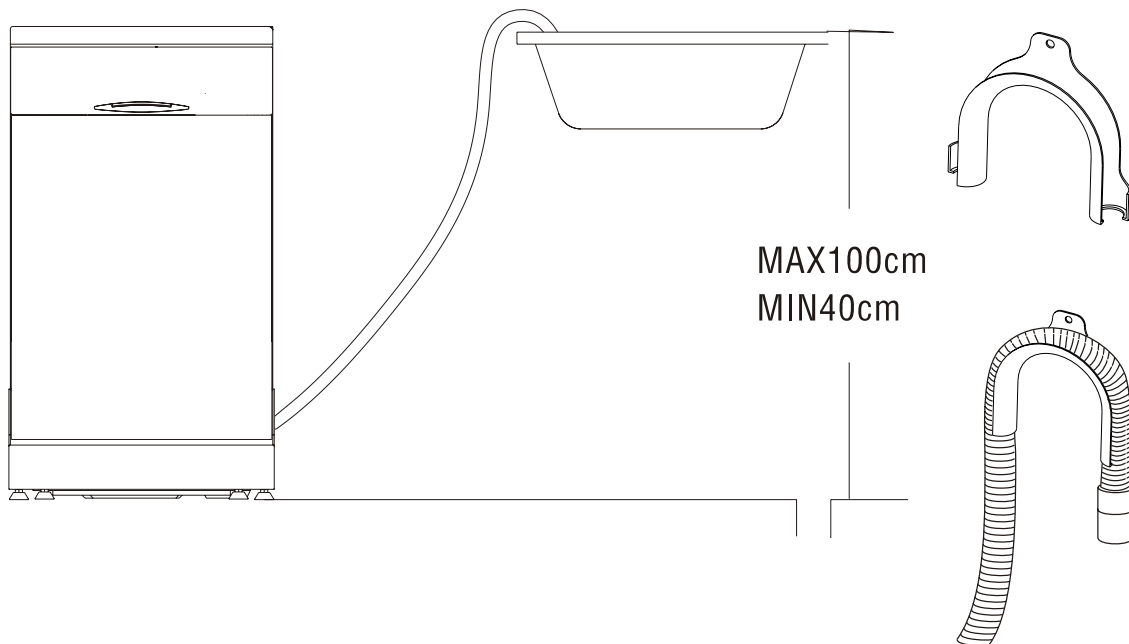
Unpacking

- 1) Removing the packing accessories, please pay attention that the plastic bag should be out of the reach of children.
- 2) Open the door of the dishwasher to check the baskets are placed in the proper place (manufactures may fix the baskets by some simple ways for the sake of safety).

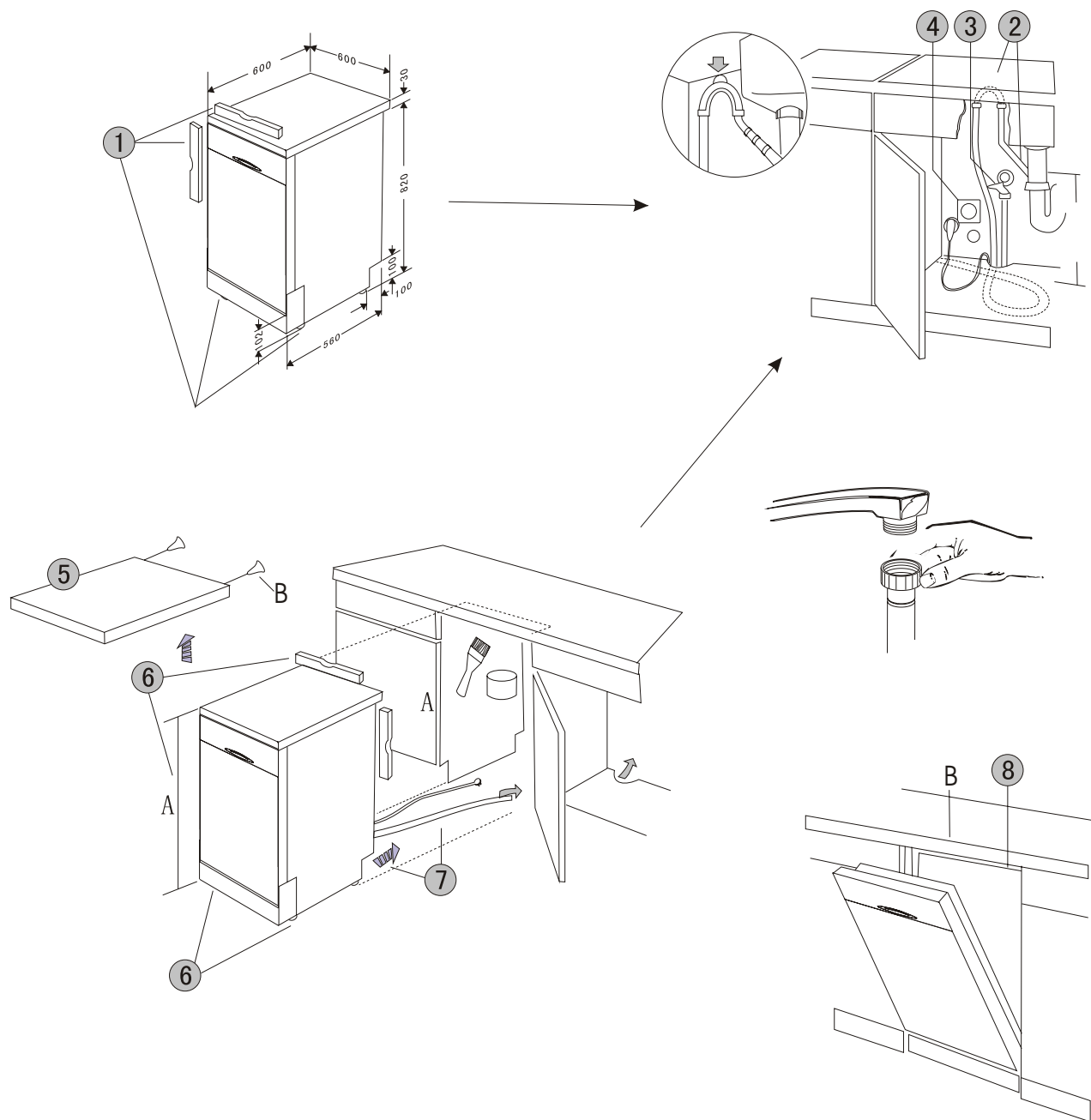
Locate the dishwasher

- 1) The dishwasher should be kept away from heating resources and not be exposed to the sun to prevent its coating from fading or falling off.
- 2) The back of the dishwasher should rest against the wall behind it and the sides, along the adjacent cabinets or wall. The water supply and drain hose of the dishwasher could be positioned to the right of the left to facilitate proper installation.
- 3) The dishwasher could not only be built in the cabinet and also be placed freely.

Installation sketch map of free-stand type



Installation sketch map of Built-in type

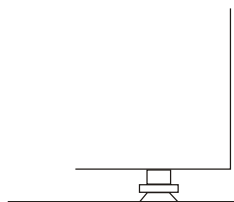


Installation steps:

1. leveling the appliance
2. connecting drain hose
3. connecting charging hose
4. electrical connection
5. disassemble the top board
6. Leveling the appliance
7. positioning in the cabinet
8. Fix the top with the board of cabinet

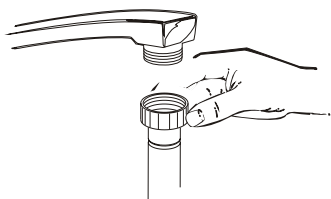
Note: When making built-in installation of free-stand dishwasher, after disassemble the top board, the hook of it situated on the upper front corsspiece willbe extruded and needs to be disposed

Leveling the appliance



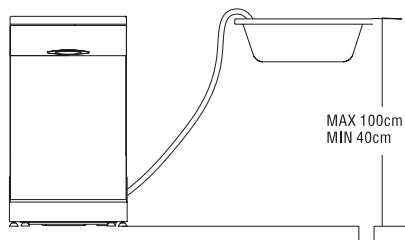
Once the appliance is positioned, adjust the feet(screw them in o rout) to adjust the height of the dishwasher, making it level to ensure the proper performance.

Charging hose connection



- 1.Connect the charging hose to a water faucet(with a unicouple).See figure 4.
- 2.If the water pipe is new or has not been used for an extended period of time, let the water run to make sure that the water is clear and free of impurities, then connect it with the charging hose of the dishwasher.
- 3.The water pressure is 0.04–1.00Mpa.

Drain hose connection



Insert the drain hose into a drain pipe, or let it run into a sink, but the free end of the hose must be at a height of less than or equal to 80cm and must not be immersed in water.

Electrical connection

1. After making sure that the voltage and the frequency values for the current in the home correspond to those on the rating plate, insert the plug into an electrical socket which is earthed properly. See figure 6.
2. If the electrical socket to which the appliance must be connected is not appropriate for the plug, replace the socket rather than using a adaptor or the like as they could cause overheating and burns.

1.3 Trial Running

After installation, choose any one of the programs to run to check the dishwasher functions well.

Chapter II Maintenance

2.1 Foreword

Before any repair service, you should check:

- a) Whether the dishwasher is properly installed according to the installation instruction.
- b) Whether the damaged components have been repaired or not.
- c) Whether the charging hose and the drain hose are properly installed.
- d) Whether the dishwasher is level or not.
- e) Whether there is salt in the water softener.
- f) Whether there is rinse agent in the dispenser.

"Timer" is a kind of electric mechanical device, through a group of cams to make the preset contacting points turn on or off to convey the current to all electric parts.

By reading the program schedule, we could know all the steps in the program controlled by timer and the connected electrical wires. To each step of the timer schedule, we could immediately find the electrified parts, which are connected by wires to the timer.

Meanwhile, reading the program schedule and circuit diagram of the timer is most efficient way to identify and solve the problems existing in the electrical parts.

2.2 Troubleshooting

Questions put forward by users	By misuse of users	The problems of the dishwasher itself
The dishwasher does not start	<ul style="list-style-type: none">* Something wrong with the socket* No water (the water valve is closed)* Improper electrical connection* The door is not properly closed* Incorrect position of charging hose	<ul style="list-style-type: none">* Power cord* "ON/OFF" switch* Door switch* Water inlet valve* Pressure switch* Aqua-stop switch timer
Water floods in the dishwasher		<ul style="list-style-type: none">* Air leakage of the chamber* The hose of pressure switch* Pressure switch* Water inlet valve
The dishwasher does not heat		<ul style="list-style-type: none">* Malfunction of heating element* The circuit is not properly contacted* Malfunction of the thermostat* Malfunction of 90°C thermal controller* Timer
No water comes into the dishwasher	<ul style="list-style-type: none">* Water supply is cut off* The filter of the water inlet valve is clogged.	<ul style="list-style-type: none">* Connection to the inlet valve is broken or damaged.* Electrical connection is cut off.* Pressure switch* Aqua-stop switch* The softener is blocked.
The dishwasher works continuously without action of the timer		<ul style="list-style-type: none">* The thermostat assembly doesn't function properly* The 90°C thermostat works abnormally* Heating elements are not correctly contacted or damaged* Incorrect connection of timer

The dishes are not clean enough after washing	<ul style="list-style-type: none"> * The filter is clogged. * Unqualified detergent or the dosage in the container is not correct. * No salt in the softener * No rinse agent * Incorrect loading of dishes * <p>Something wrong with the drain pipe in the home</p>	<ul style="list-style-type: none"> * Flow and pressure of washing pump * Detergent is not released from dispenser * Heating element is not working * The nozzle is blocked by food particles * No water coming into the dishwasher * The dispenser malfunctions * Sth wrong with the pressure switch and the charging water is not enough
The dishwasher could wash properly	* Wrong loading position of the dishes.	<ul style="list-style-type: none"> * Short circuit of startup capacitance * Washing motor is blocked or burnt * Pressure switch * Malfunction of timer
The dishes are wet	* The customer chose the program without drying performance	<ul style="list-style-type: none"> * 58°C thermostat doesn't work properly * 90°C thermostat doesn't work properly * Heating element is burnt or malfunctions * Something is wrong with the timer
The dishes are not completely dried	<ul style="list-style-type: none"> * Incorrect loading of the dishes * Earlier opening of the door * No rinse agent or the dosage is not enough 	<ul style="list-style-type: none"> * The passage of the breather is blocked * The drain pump does not drain out water * Detergent is not released from the dispenser
Too much noise	* Incorrect loading of dishes	<ul style="list-style-type: none"> * Noise from washing pump * Noise from drain pump * Noise from water inlet valve
Feeling like to be electrically shocked by the dishwasher	* The electrical wire in the house is not earthed.	<ul style="list-style-type: none"> * Connection of the terminal box * Grounding of the heating element * Circuit and its components
Water leakage and flood of the dishwasher	<ul style="list-style-type: none"> * Too much detergent * Using the detergent with foam, which is not the one intended for using with dishwasher 	<ul style="list-style-type: none"> * Pressure switch * Door gasket * Water leakage of pipes, gaskets and bolts * Drain hose * Washing pump * Softener valve * Softener * Breather

The timer does not stop		* Malfunction of the timer
Odd smell in the dishwasher	<ul style="list-style-type: none"> * Food particles on the tub bottom * Food particles on the heating element * Plastic dishes used in the dishwasher 	<ul style="list-style-type: none"> * The water temperature is too high when drying (overheating) * The 58°C thermostats doesn't work properly
Long time for a washing cycle	<ul style="list-style-type: none"> * Inlet pressure is too low * Incorrect location of charging and drain hoses or they are bent * The filter of inlet valve is blocked 	<ul style="list-style-type: none"> * The drain hose is crimped or bent * Malfunction of the drain pump * Infill of the inlet valve is blocked * Clog of the softener
The detergent could not be released from the dispenser	<ul style="list-style-type: none"> * Bad quality of the detergent * The detergent is damped into blocks * Wrong location of the dishes 	<ul style="list-style-type: none"> * The plug of detergent container could not be opened. * No action of the solenoid valve of electric feeding dispenser. * Malfunction of the electric circuit * Malfunction of the timer
Dishwasher stops when cycling	<ul style="list-style-type: none"> * The door is not completely shut * The filter is blocked * Too much detergent 	<ul style="list-style-type: none"> * Electric circuit * Door switch * Pressure switch * Timer * Power switch
Dishes are damaged or glassware is broken	<ul style="list-style-type: none"> * The dishes are not suitable for washing in the dishwasher * The dishes are overturned * The washing temperature is not suitable for glassware 	<ul style="list-style-type: none"> * Basket is damaged * Malfunction of 58°C and 90°C thermostats
The dishwasher does not drain	* Block of drain hose	<ul style="list-style-type: none"> * Malfunction of drain pump * Improper connection of electric circuit * Malfunction of the timer
Lime deposits form on the dishes	* Too much detergent	* Reduce the dosage
The dishes look greasy and a blue film forms on them sometimes	* Too much rinse agent	* Reduce the dosage
Dirty spots on the surface of the dishwasher	* The detergent sticks to the damp surface	<ul style="list-style-type: none"> * Use the detergent according to the user's manual * The detergent should not be spilled on the surface of the dishwasher
Strange color of the surface of the washed dishes	* The salt is not intended to use in the dishwasher.	* The influence of salt on the resin

2.3 Notes

1. The 50°C and 58°C thermostat will only close until the required temperature is reached.
2. The 90°C thermostat is closed under normal condition. When the dishwasher is heated to a certain temperature, the thermostat will open to shut off the electric supply to the eletrothermal elements.
3. In the charging period, the contacting point "1.2" of pressure switch will close while "1.3" will close when the charging time is over.
4. Aqua-stop device: start up the drain pump and make the dishwasher stop its running.
5. 90°C thermostat: to shut off the electric supply of electrothermal elements.

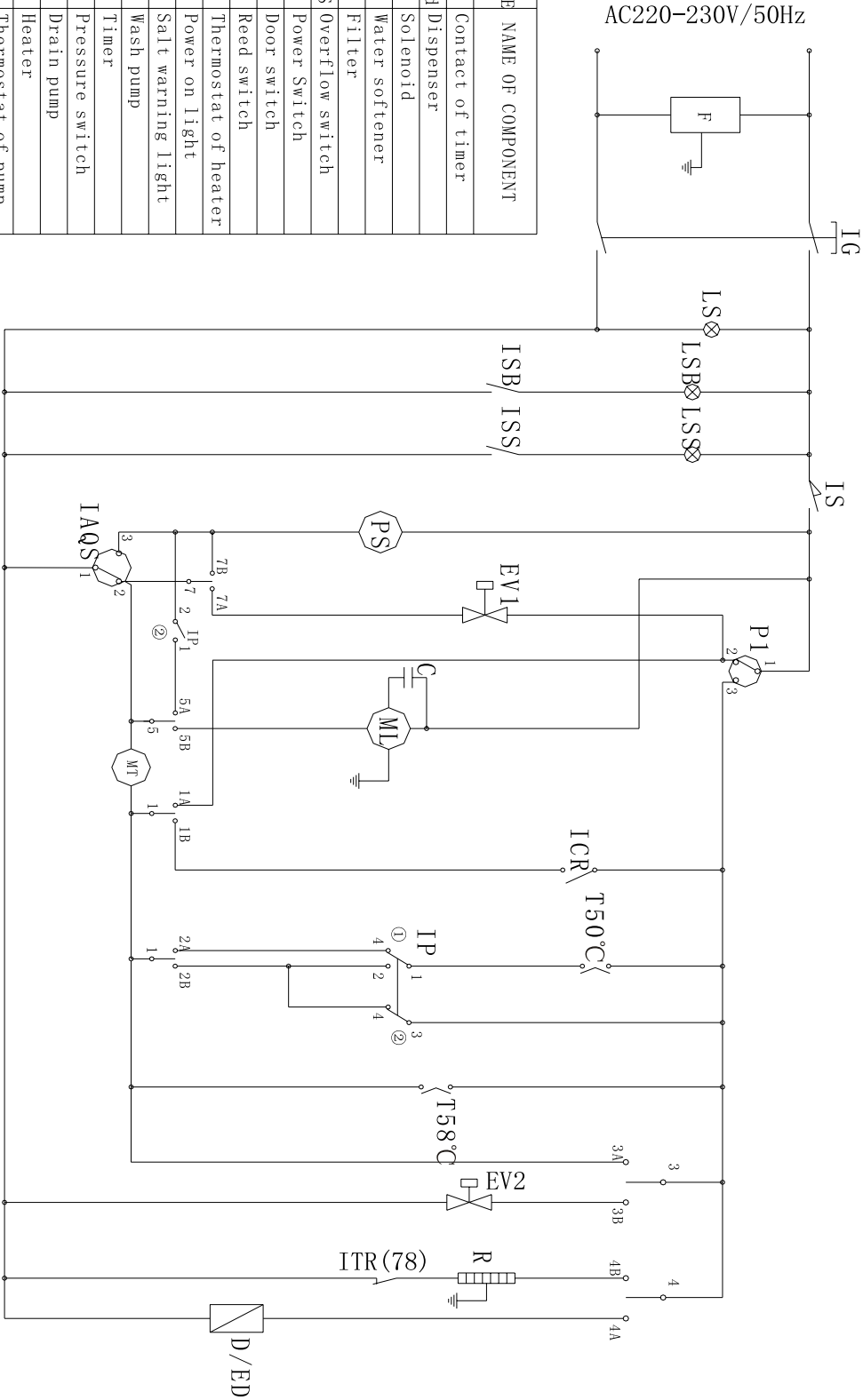
2.4 Attached drawings

TD series Timer Electric Drawing

TD series Timer Connection Drawing

TD series timer circuit diagram

CODE	NAME OF COMPONENT
ClN	Contact of timer
D/Ed	Dispenser
EV1	Solenoid
EV2	Water softener
F	Filter
IAQS	Overflow switch
IG	Power Switch
IS	Door switch
ISS	Reed switch
ITR	Thermostat of heater
LS	Power on light
LSS	Salt warning light
ML	Wash pump
MT	Timer
P0	Pressure switch
PS	Drain pump
R	Heater
S	Thermostat of pump
TS50	50C Thermostat
TS58	58C Thermostat
ICR	Rapid wash
PLUS	Intensive wash
ISB	Reed switch
LSB	Rinse aid warning light



Circuit
Diagram

TD series timer wiring diagram

CODE	NAME OF COMPONENT
CLn	Contact of timer
D/Ed	Dispenser
EV1	Solenoid
EV2	Water softener
F	Filter
IAQS	Overflow switch
IG	Power Switch
IS	Door switch
ISS	Reed switch
ITR	Thermostat of heater
LS	Power on light
LSS	Salt warning light
ML	Wash pump
MT	Timer
P0	Pressure switch
PS	Drain pump
R	Heater
S	Thermostat of pump
TS50	50°CThermostat
TS58	58°CThermostat
ICR	Rapid wash
PLUS	Intensive wash
ISB	Reed switch
LSB	Rinse aid warning light

