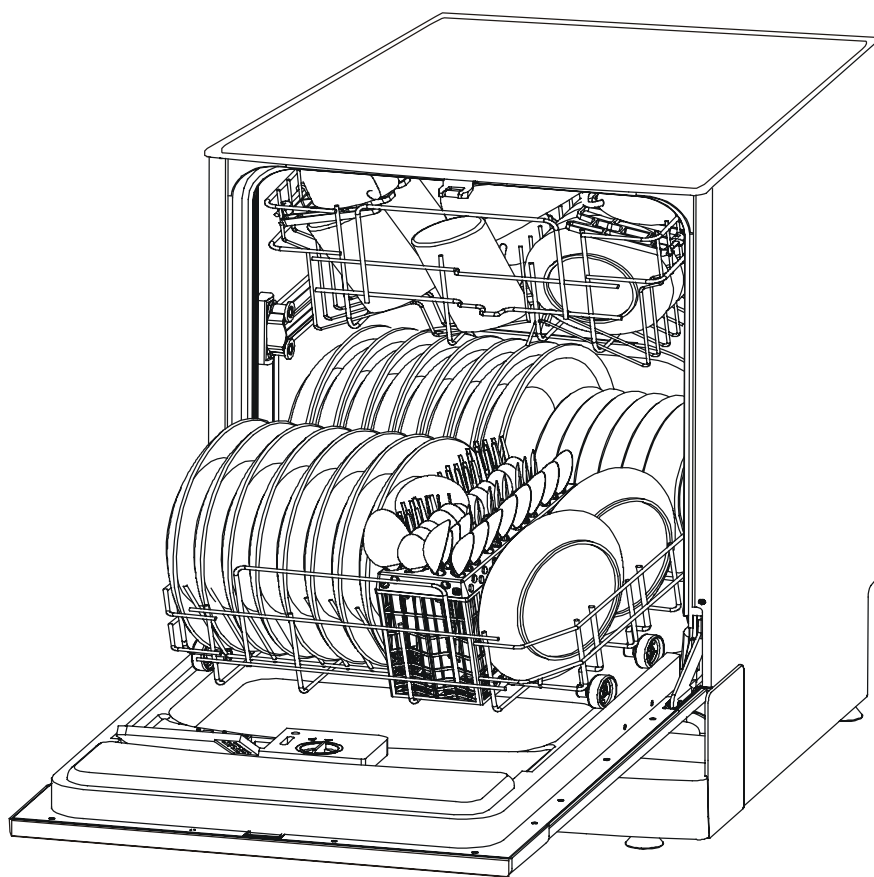

Dishwashers

Installation Manual

WQP12-9270



● Notes

Carefully read this manual before installation

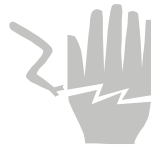
Reading this manual will help to understand the connections of inlet, drain hoses and power cord, and to find a optimal position for the dishwasher.

Attention:

The installation of the pipes and electrical equipments should be done by professionals.



Warning



Electrical Shock Hazard
Disconnect electrical power before installing dishwasher.

Failure to do so can result in death or electrical shock.

● Installation preparation

The installation position of dishwasher should be near the existing inlet and drain hoses and power cord.

One side of the cabinet sink should be chosen to facilitate the connection of drain hoses of the dishwasher.

Note: please check the accompanying installation accessories(hook for aesthetic panel ,screw)

● Installation instruction

Please carefully read the installation instruction.

● Illustrations of cabinet dimensions and installation position of the dishwasher

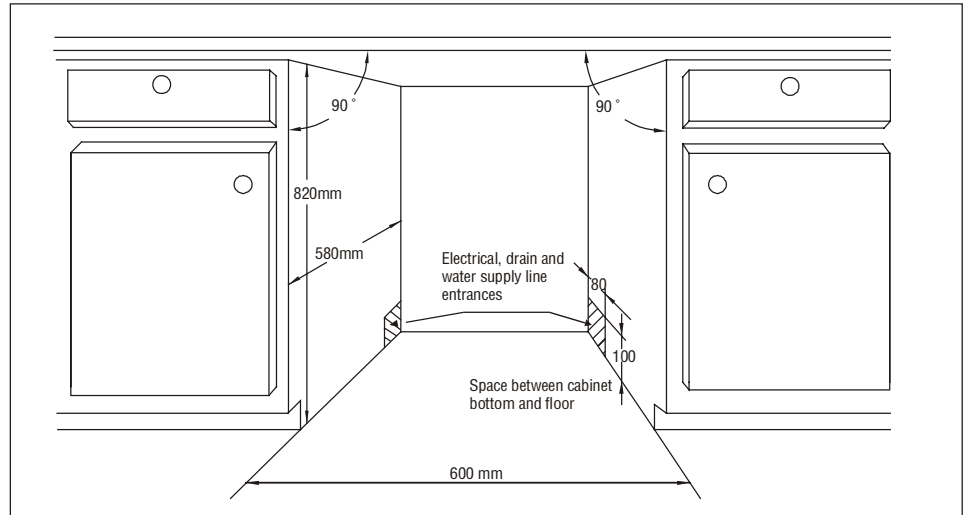
Preparations should be made before moving the dishwasher to the installation place.

1 Choose a place near the sink to facilitate the installation of inlet and drain hoses (see figure 1).

2 If dishwasher is installed at the corner of the cabinet, there should be some space (illustrated in figure 2) when the door is opened.

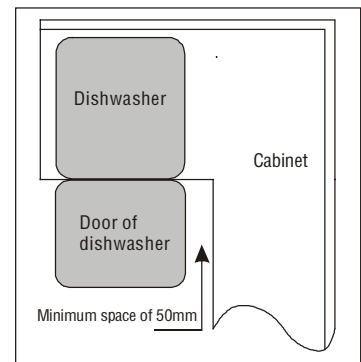
【 Figure1 】

Cabinet dimensions
Less than 5mm
between the top
of dishwasher and
cabinet and the
outer door aligned
to cabinet.



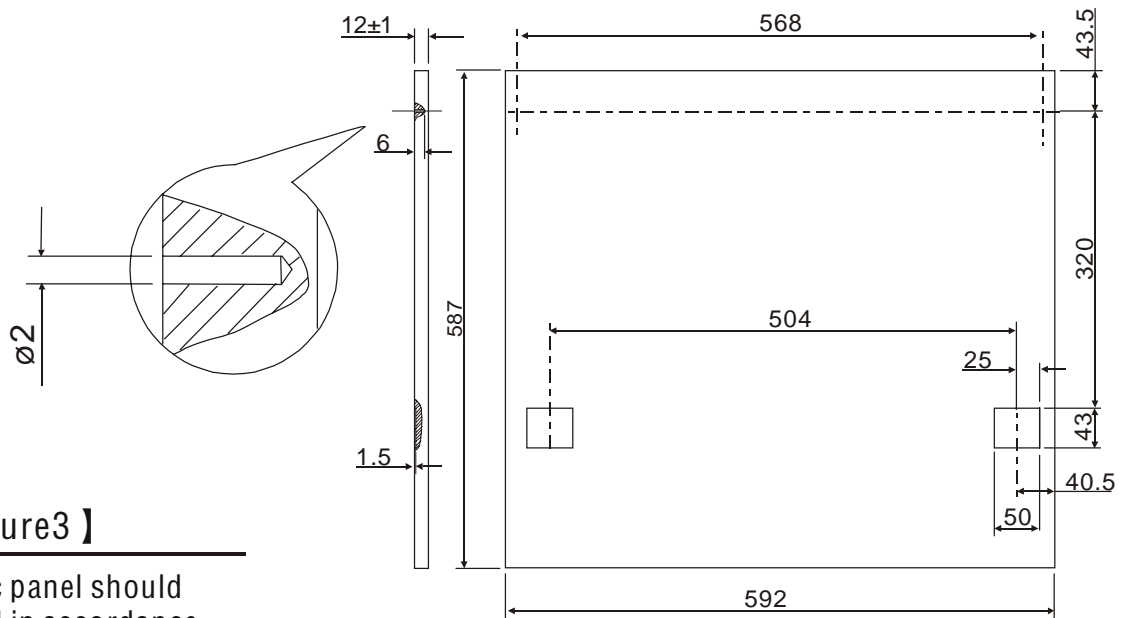
【 Figure2 】

Minimum space when
the door is opened



● Aesthetic panel's dimensions and installation

1 The aesthetic wooden panel could be processed according to the figure 3



【 Figure3 】

The aesthetic panel should
be processed in accordance
with the illustrated dimensions

(Unit: mm)

The length of the panel should be within
the range of 506.5--587mm, not more
than 587mm.

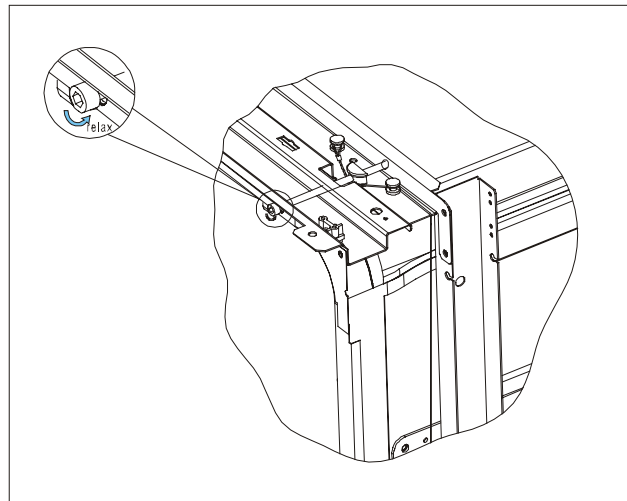
● Tension adjustment of the door spring

The door springs are set at the factory to the proper tension for the outer door. If aesthetic wooden panel are installed, you will have to adjust the door spring tension. Rotate the adjusting screw to drive the adjustor to strain or relax the steel cable (see figure 5).

Door spring tension is correct when the door remains horizontal in the fully opened position, yet rises to a close with the slight lift of a finger.

【 Figure5 】

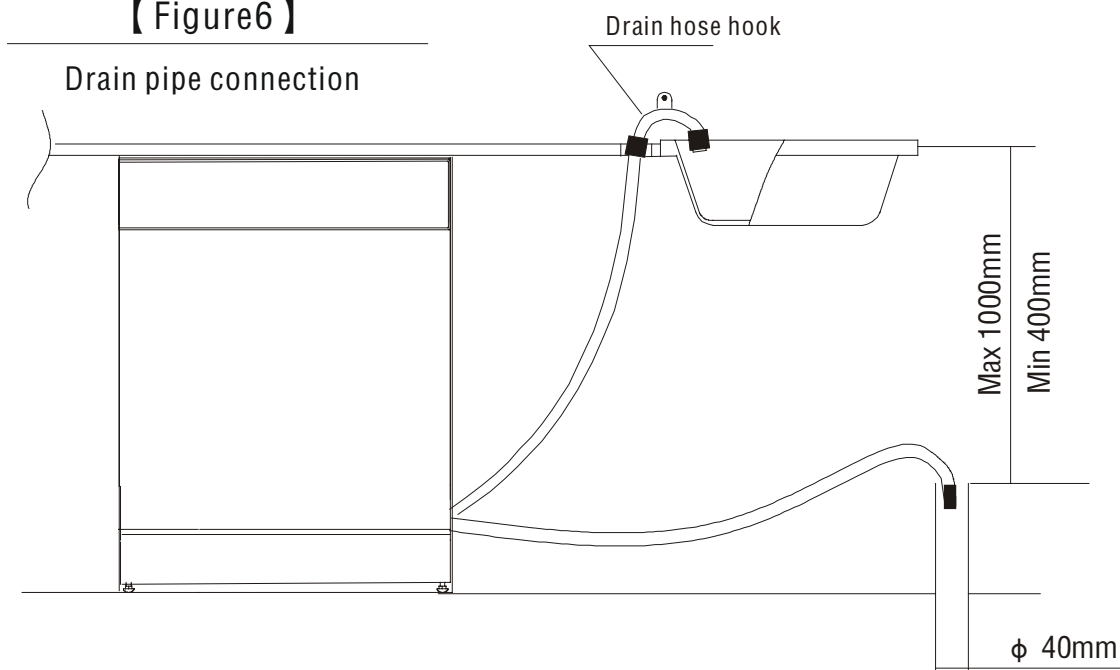
Tension adjustment
of the door spring



● Connection of drain hoses

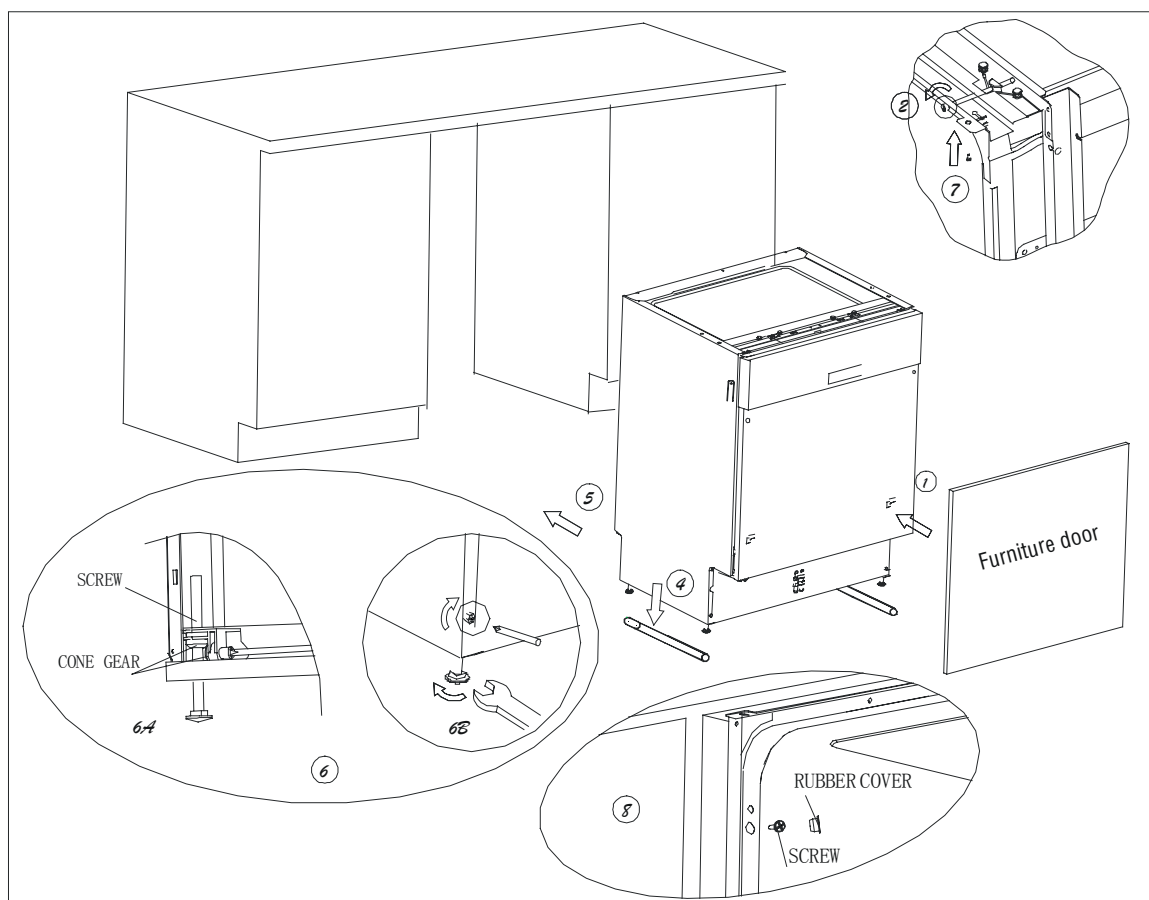
Insert the drain hose into a drain pipe with a minimum diameter of 4cm, or let it run into the sink, making sure to avoid bending or crimping it. Use the special plastic support that comes with the appliance (figure 6). The free end of the hose must be at a height between 400 and 1000mm and must not be immersed in water to avoid the back flow of it. ATTENTION: The special plastic hose support must be solidly fastened to the wall to prevent the drain hose from moving and allowing water to spill outside the drain.

【 Figure6 】



● Dishwasher installation steps

- 1 Install the furniture door to the outer door of the dishwasher using the brackets provided. Refer to the template for positioning of the brackets.
- 2 Adjust the tension of the door springs by using an Allen key turning in a clockwise motion to tighten the left and right door springs. Failure to do this could cause damage to your dishwasher (Illustration 2).
- 3 Connect the inlet hose to the cold water supply .
- 4 Connect the drain hose. Refer to diagram.(Figure 6)
- 5 Connect the power cord.
- 6 Put the dishwasher to slide rails(Illustration4) .
- 7 Add the condensation strip following instructions on the reverse side of the condensation strip .
- 8 Place the dishwasher into position.
- 9 Level the dishwasher. The rear feet can be adjusted from the front of the dishwasher by turning the screws on the left and right hand side of the cabinet (Illustration 6A). To adjust the front feet, use a wrench and turn the front feet until the dishwasher is level (Illustration 6B).
- 10 The dishwasher must be secured in place. There are two ways to do this:
 - A. Normal work surface—secure to the work surface by using two woodscrews ensuring the dishwasher weight is not being hit by the surface (Illustration 7).
 - B. Marble or granite work top—secure the bracket to the side panel of the dishwasher and secure the dishwasher to the furniture housing. Put the rubber cap over the screw (Illustration 8).

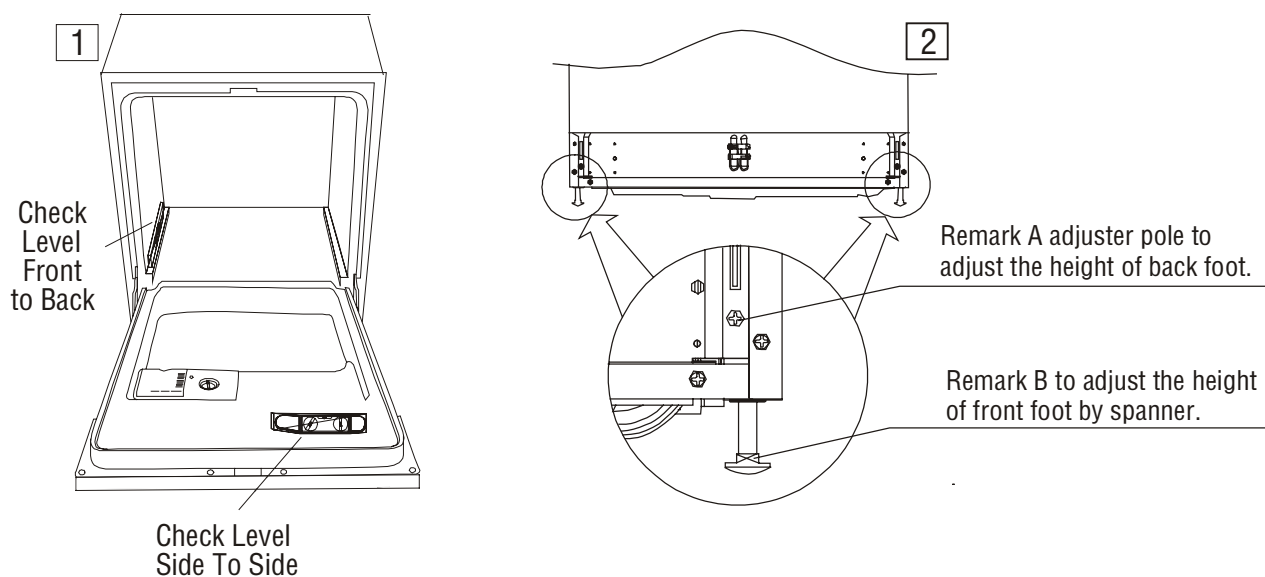


【 Figure 7 】

Installation steps

The dishwasher must be level for the racks to operate correctly and to give maximum wash performance.

- 1 Place a spirit level on the door and the lower rack rail as shown in diagram 1 to check that the dishwasher is level.
- 2 It is easy to level the dishwasher by adjusting the four leveling legs individually from the front of dishwasher.
 - 2.1 Refer to Remark A diagram 2 for adjustment of the rear legs, turn the screw clockwise to lower the rear legs until the correct high is obtained.
 - 2.2 Refer to Remark B diagram 2 for adjustment of the front legs to obtain the correct height.
- 3 When leveling the dishwasher be careful not to allow the dishwasher to tip over.



【 Figure 8 】

Illustration of feet adjustment

● Start of dishwasher

The followings should be checked before starting the dishwasher.

- 1 Whether the dishwasher is level and fixed.
- 2 Whether the inlet valve is opened.
- 3 Whether there is leakage at the connections of the conducts.
- 4 Whether the wires are tightly connected.
- 5 Whether the power is switched on.
- 6 Whether the inlet and drain hoses are not trapped or kinked.
- 7 All packing materials and documents should be taken out from the dishwasher.

● Attention

After installation, please put this installation manual in a safe place.. The content of this manual is very helpful to the users.who maybe unfamiliar with the appliance.

NOTE:

The manufacturer, following a policy of constant development and up–dating of the product, may make modifications without giving prior notice.